



Wish List



Methodist Home for Nursing & Rehabilitation

As a non-sectarian, non-profit residence, the Home is grounded in the vision of the seven Methodist women who founded it in 1850. We are dedicated to ensuring the best quality of life for individuals affected by illness or injury with a wide-range of medical, nursing and rehabilitation services. Personalized and compassionate care is offered within the intimate, comfortable setting of our historic dwelling. We focus on the interests of the individual, by providing tailored care aimed at promoting health, dignity and independence, within a diverse community of people.

Families and friends often ask how they can contribute, in a meaningful way, to the well being and quality of life of our residents. If you are planning a donation to the home, here are highlights of activities and equipment that will benefit the residents and need funding.

We are very grateful to all of the donors and volunteers that continue to support our mission.



Methodist Home for Nursing & Rehabilitation
4499 Manhattan College Parkway • Riverdale • New York, 10471
718-548-5100
www.methodisthome.org



Sunday Brunch:

TIMEFRAME: MONTHLY

EVENT DESCRIPTION: A full service Brunch in a restaurant style setting. Menu to include pancakes, waffles, an omelet station, crepes, French toast, quiche, fruits and juices.

Notes: Families will be charged a fee per person while Residents will enjoy Brunch free of charge.

ENTERTAINMENT: \$200/month (\$2,400 per year) **FOOD:** \$1,280/ month (\$15,360 per year)

YEARLY EXPENSE: \$17,760 per year



Goal: To give Residents an opportunity to enjoy a “restaurant-like” meal in a formal setting. Residents will be given the opportunity to invite family members and friends to join them. In addition to the formal setting, the Home would like to provide live music and adequate staff who will serve guests restaurant style.

Ice-cream Socials (Seasonal)

TIMEFRAME: SUMMER (Twice a month during June, July & August)

EVENT DESCRIPTION: This activity will be led by volunteers who will serve the Residents. Menu will include various flavors of ice-creams and toppings.



	<i>Month of June:</i>	<i>Month of July</i>	<i>Month of August</i>
Ice-Cream & Toppings:	\$700	\$700	\$700

YEARLY EXPENSE: \$2,100

Goal: Ice-cream socials will add to the seasonal activities our Residents enjoy. The Home has been able to receive the commitment of volunteers to carry out this activity successfully. Volunteers will transport Residents from the various floors to the formal garden of the Home (weather permitting,) where Residents can enjoy nature as well as a variety of ice-cream flavors. To enhance this fun activity, we will add to the garden’s ambience by decorating with balloons, colorful tablecloths, napkins and all the trimmings necessary.

Summer BBQ

TIMEFRAME: Last week of August

EVENT DESCRIPTION: Once a year, this event will be held outside (weather permitting). It will include live music and typical BBQ food. Administrative staff will volunteer to serve and transport Residents. Residents will have the opportunity to invite family and friends to join them. The fee for visitors will be modest enough to encourage participation.

ENTERTAINMENT: \$400

FOOD: \$1,600

DECORATIONS: \$300

TOTAL EXPENSE: \$2,300



DINING ROOM CHAIRS



DESCRIPTION: The dining room is a place where we share our meals, a laugh, perhaps, or come together for an activity or event. The existing chairs are old and frail and desperately need to be replaced. Residents that are not in a wheelchair would enjoy a safe and comfortable chair in this very active space. These new chairs will give the room a cohesive look and offer family and friends a place to sit.

EXPENSE: 40 Chairs (\$425 p/chair)

TOTAL COST: \$17,000.00

Pre-Thanksgiving Dinner

DATE: November Duration: 2 Hours

EVENT DESCRIPTION: Formal dining room setting with holiday dinner and live music for the enjoyment of all.

ENTERTAINMENT: \$500

FOOD/BEVERAGE: \$2,500

DECORATIONS: \$300

TOTAL EXPENSE: \$3,300



Goal: This event is designed to give families an opportunity to share this holiday with their loved ones prior to the official date. The Home’s main dining room will accommodate over 100 persons attending this event. The menu will include typical Thanksgiving foods and entertainment. Visitors will be charged a modest fee for the occasion.

Holiday Tree Lighting Party

TIMEFRAME: DECEMBER

EVENT DESCRIPTION:

This event will be held in the Great Room where Residents will enjoy live entertainment, light appetizers and drinks. Administrative staff will volunteer to host the event.

ENTERTAINMENT: \$1,500 (Concert by orchestras from local colleges)

FOOD/BEVERAGE: \$500

EXPENSE PER EVENT: \$2,000

Goal: To offer Residents an opportunity to share a meaningful holiday occasion with their families.



HAPPY HOUR

TIMEFRAME: Monthly

ACTIVITY DESCRIPTION:

The Happy Hour will include open bar, snacks and entertainment.

ENTERTAINMENT: \$250/month \$3,000/year **SNACKS & BEVERAGES:** \$300/month \$3,600/year
YEARLY EXPENSE: \$6,600

Goal: Happy Hour is an activity that is very much enjoyed by our Residents. At present time, the Home does not have the means to offer the Residents a Happy Hour that includes live music and a selection of beverages they enjoy. It is our goal to make this activity fun and very much like the Happy Hour they once enjoyed when living in their community.



Catered Food/Bufferet



TIMEFRAME: Quarterly

DESCRIPTION OF EVENT:

This new event will give Residents the opportunity to enjoy a restaurant meal of their choice right at home. Foods to choose from may include: Chinese, Japanese, Italian, and Spanish.

EXPENSE PER EVENT/QUARTER: \$2,450

MONTHLY	MARCH	JUNE	SEPTEMBER	DECEMBER	YEAR
ENTERTAINMENT:	\$300	\$300	\$300	\$300	\$1,200
FOOD & BEVERAGE:	\$1,500	\$1,500	\$1,500	\$1,500	\$6,000

YEARLY EXPENSE: \$7,200

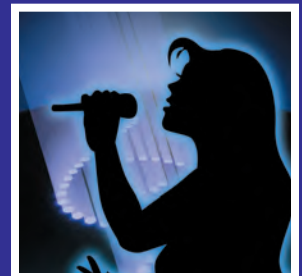
Goal: Our Residents enjoy catered food. It is our wish to provide our Residents with a monthly catered food of their choice.



Monthly Concerts by Various Orchestras & Musicians

PER YEAR: \$6,000

EXPENSE per concert/month is \$500



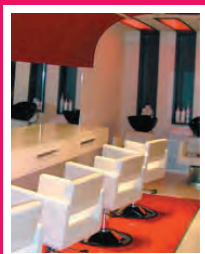
Goal: Our Residents would like to attend to concerts, plays and museums. This is not possible as many of them are wheelchair bound and the Home does not own transportation for outdoor trips. It is our goal to bring these fun activities here to the Home for everyone to attend and enjoy in a safe environment.

Aquarium (Maintenance)



GREAT NEWS! A friend of the Home has generously donated the funds to purchase a brand new salt water Aquarium.
ANNUAL MAINTENANCE (including fish) \$6,000.00

Goal: The Methodist Home would like to exhibit this aquarium for the enjoyment of the Residents, families and friends. Aquariums have proven to bring many benefits to residents. These benefits include relaxation, alertness and increase in food consumption of up to 17.5 percent. It is our desire to offer our Residents the most "home like" environment. We strongly believe that this by adding an Aquarium, our Home will enhance the lives of the Residents.



Beauty Parlor Renovation

It is the Home's goal to provide our Residents with a modern and adequate space modeled after a "Park Ave. Beauty Salon." The current space is outdated, unpractical and in need of the following:

MIRRORS \$1,200

BLOW-DRYERS (overhead) \$ 2,100

TELEVISION \$1,200

AMBIANCE SPA VIDEOS \$150

ELECTRICIAN WORK \$950

FURNITURE \$5,000

EXPENSE: \$10,600



RESIDENT LOUNGE

A lounge for Residents to spend time to read, watch television and have a quick snack is a needed space not available at the moment. This new space will include a modern non-facility like atmosphere where Residents can enjoy coffee and watch their favorite show, chat with friends or enjoy small snacks.

FURNITURE \$7,000

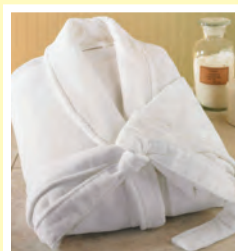
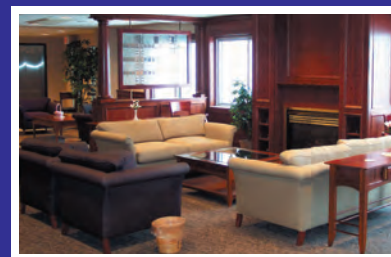
TELEVISION \$1,200

ART \$500

MICROWAVE \$150

WINDOW TREATMENTS \$2,300

EXPENSE: \$11,250



Spa Bathrobes & Towels

Goal: To acquire 240 very soft bath towels and 120 bathrobes for our Residents. All the linens used at the Methodist Home are rented from Angelica, a wholesaler Healthcare and Hospitality Company providing apparel and linen services to nursing homes and hospitals. The towels provided can be rough making it unpleasant to use. We are seeking delicate superfine microfiber; towels and robes to provide our Residents with a spa-like experience.

Bathrobe Features: Full length long robe, classic shawl collar, front patch pockets, and ties at waist both inside and outside. Soft, lightweight, & cozy.

PRICE: \$50 each (\$6,000 for 120)

Bath towel Size: 30x36. (Although the Home's census is 120, 240 towels are needed to have enough at all times.)

PRICE: \$30 each (\$7,200 for 240 towels)

TOTAL EXPENSE: \$13,200



PROJECTOR

Goal: To have a projector with a portable screen to be used for Residents' activities. We are looking to provide Residents with recreational activities such as lectures, seminars, museum exhibitions, horticultural shows and travel and leisure events.

We are seeking a projector, a portable screen and remote. This all-in-one product includes built-in progressive scan DVD/CD player and four 5 W Dolby 5.1 DTS stereo speakers, displays standard DVDs in even more detail at high-definition 720p resolution, and projects images up to eight times larger than on a 40", widescreen TV. The Moviemate 72 works with your Apple iPod, Nintendo Wii, Sony PS3 or Microsoft Xbox 360 video game system for more entertainment options.



PROJECTOR: \$1,999.99

PORTABLE SCREEN: (93"X93"): \$605.99

This portable projection screen features a special coating to allow wide-angle viewing true color reproduction.

TOTAL EXPENSE: \$2,606